

The image features a series of overlapping geometric shapes. On the left, a blue semi-circle is partially covered by a red semi-circle. Below these, a gold-colored area with a wavy top edge is visible. To the right, a red square is partially overlapped by a blue square. The blue square contains a white semi-circle with a gold border. The text 'MAGIC' is centered in the red square, and '2021' is positioned below it.

MAGIC

2021

MAGIC

2021



EXPORT DIVISION



ARTE & D. S.R.L.
www.arte-d.it
info@arte-d.it
T. +39 0429 782200



DIVISIONE ITALIA



ELLECI OFFICE S.R.L.
www.ellecioffice.it
info@ellecioffice.it
T. +39 0429 784599

Seating Solutions made in Italy since 1976 / Seating Solutions made in Italy since 1976

L'Azienda nasce da una lunga tradizione familiare di produttori di sedute per ufficio, contract e collettività.

Negli anni ha focalizzato l'attenzione sulla qualità, sul design e sul servizio, mantenendo una produzione interna che l'ha resa una prestigiosa realtà produttiva italiana del settore.

The company was born from a long family tradition of manufacturers of office, contract and community seating. Over the years it has focused its attention on quality, design and service and, by maintaining an internal production, has become a prestigious Italian leading manufacturer.



Qualità e sostenibilità ambientale / Quality and environmental sustainability

Siamo certificati **ISO 9001** per ottimizzare i processi aziendali, migliorando l'efficienza della produzione e del servizio offerto. Siamo certificati **ISO 14001**, perché crediamo nell'importanza di mantenere sotto controllo l'impatto ambientale delle nostre attività produttive. Siamo certificati **OHSAS 18001** per garantire la salute e la sicurezza dei lavoratori, proteggendo le persone che operano in azienda. L'azienda ha inoltre approvato un proprio **Codice Etico** su base volontaria.

We are **ISO 9001** certified to optimize business processes, improving the efficiency of production and of the service provided. We are **ISO 14001** certified, because we believe in the importance of keeping the environmental impact of our production activities under control. We are **OHSAS 18001** certified to guarantee the health and safety of workers and to protect the people who work in the company. The company has also approved its own **Code of Ethics** on a voluntary basis.

Abbiamo eseguito test specifici presso laboratori autorizzati per garantire la conformità dei prodotti ai Criteri Ambientali Minimi (**CAM**). Ci siamo certificati **FSC®** perché crediamo nell'importanza di una gestione sostenibile delle foreste da un punto di vista ambientale e sociale. Siamo orgogliosi di aver vinto il prestigioso premio **FSC® Italia Furniture Award** che attesta l'operato nel rispetto della sostenibilità ambientale. Cerca i nostri prodotti certificati **FSC®**.

We have performed specific tests in approved laboratories to ensure the compliance of the products to the Minimum Environmental Criteria (**CAM**). We have been **FSC®** certified because we believe in the importance of sustainable forest management from both an environmental and a social point of view. We are proud to have won the prestigious **FSC® Italia Furniture Award** which certifies our work is in compliance with environmental sustainability. Look for our **FSC®** certified products.



Consulenza tecnica / Technical advice

Come membri del Comitato Tecnico delle normative UNI e soci membri CATAS possiamo fornire ai nostri partner consulenza su aspetti normativi e di certificazione inerenti il mondo dell'ufficio e della collettività.

As members of the Technical Committee of UNI standards and CATAS, we can provide our partners with advice on regulatory and certification aspects related to the office and community world.

Distribuzione capillare / Distribution

Grazie ad accordi stretti con i più importanti partner logistici, riusciamo a garantire una distribuzione capillare su tutto il territorio nazionale, in Europa e nel Mondo, con una tracciatura del trasporto durante tutto il suo percorso.

We partnered with the most important logistics companies in order to be able to guarantee a widespread distribution throughout the national territory, all over Europe and in the world.



Per i vostri progetti / For your projects

Mettiamo a disposizione strumenti utili per partner, progettisti e operatori del settore: cataloghi, librerie CAD e certificazioni di prodotto.

Alcune di queste risorse sono accessibili autonomamente direttamente dal sito tramite autenticazione.

Siamo inoltre presenti con una selezione dei nostri prodotti su pCon Planner, il software che permette di realizzare progetti di interior design anche tramite tablet o smartphone.

We provide useful tools for partners, designers and specialized operators: catalogs, CAD libraries and product certifications. Some of these resources can be accessed autonomously directly from the site through authentication. We are also present with a selection of our products on pCon Planner, the software that allows you to create interior design projects even via tablet or smartphone.

pCon

A AUTOCAD

GRAPHISOFT
Archicad®

Indice

Index

direzionali / executive	09
SELECTA	11
SADIA	15
TRILOGY	19
SKYNET	23
TARIFA	27
X-NET	33
operative / task chairs	37
DOTTY	39
ALTEA	43
SIERRA	47
REFLEX	51
LULÙ	53
JENIA MESH	57
MASHA	59
OXY	61
START	63
TIM	65
attesa e collettività / waiting and community chairs	67
BOX	69
JOLLY	73
POP	75
FREE	79
KUBIKA	81
ISLA	85
EASY	89
ALEXIA	93
sgabelli e tavoli / stools and tables	95
PRACTICA	97
BREAK	101
FLIP	103
appendiabiti / coat stand	
TREE	104
KLIP	105
rivestimenti / coverings	107



direzionali executive

SELECTA	11
SADIA	15
TRILOGY	19
SKYNET	23
TARIFA	27
X-NET	33



CC30200G AR2

Preziosi / executive

SELECTA

ufficio / office
sala riunioni / boardroom



C3023V



C30210G



C3023V



CC30200G AR2



CC30300G

direzionali / executive

SADIA

ufficio / office

sala riunioni / boardroom



C30310G



C3032V



PP30300G AR9



P30310G



P3032V



C40D

direzionali / executive

TRILOGY

ufficio / office
sala riunioni / boardroom



P41D



C42V



C430G



C41D

direzionali / executive

SKYNET

ufficio / office
sala riunioni / boardroom



CC1200G



C1210G



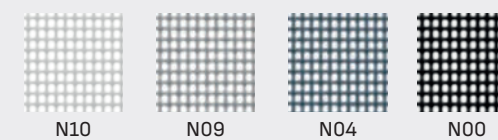
CC1200G



C123V



C122V



N10

N09

N04

N00



P142DTR BRN144

direzionali / executive

TARIFA

ufficio / office



P140DTR BRN144



B143DTR BRB144



P141DTR BRN144



B142DTR BRB144



B140DTR BRB144



B143D BRB144



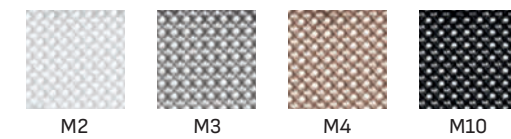
B141D



P140DTR BRN144



P143D



M2

M3

M4

M10

direzionali / executive

X-NET

ufficio / office

sala riunioni / boardroom



PP1350G BR130



P1300G BR130



P1320G



P1320G BR130



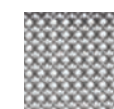
P1300G BR130



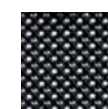
P1310G



NK10



NK09



NK00



operative task chairs

DOTTY	39
ALTEA	43
SIERRA	47
REFLEX	51
LULÙ	53
JENIA MESH	57
MASHA	59
OXY	61
START	63
TIM	65



operative / task chairs

DOTTY

ufficio / office



C170DTR BRC170



P170D



C170DTR BRC170



C170DTR BRC170



P170D BRC170



operative / task chairs

ALTEA

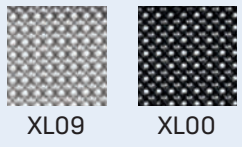
ufficio / office



P690DTR BR69



P690DTR BR69



P691DTR BR69



P691D



B150D BRB20

operative / task chairs

SIERRA

ufficio / office



P150D BRN151



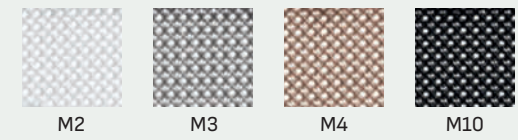
B150D BRB20

B150D



P150D BRN151

P150DTR BRN20



M2

M3

M4

M10

operative / task chairs

REFLEX

ufficio / office



N45D BRN20/CN



N45D BRN20/CN



N47V BRN151/CN



N47V



P5000D B20 BRN20

operative / task chairs

LULÙ

-
- ufficio / office
 - sala riunioni / boardroom
 - sala attesa / waiting room
 - biblioteca / library



C5003V



P5000D BRN20



P5001Y BRTBL



N5003V

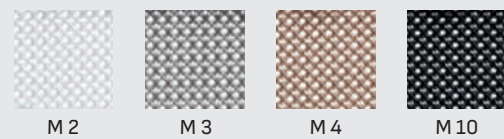
operative / task chairs

JENIA MESH



P106Y

P106D BRROBY GSROBY



ufficio / office



P106Y BR26



P106Y BR26

operative / task chairs

MASHA

ufficio / office



N5010D BRN20

B5010Y



B5010Y BRB20



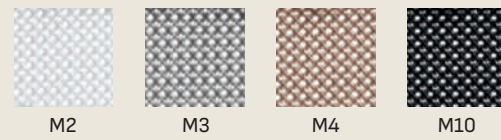
N5010Y BRSON



P96D BRTBL



P95D BRN20



M2

M3

M4

M10

operative / task chairs

OXY

ufficio / office



P96D BRN20



P96D



P401Y BRJACK



P401Y



P401Y BRN20



P401D BRN20



operative / task chairs

START

ufficio / office



EP104Y



EP100Y BRGOLF



EP100Y



EP100Y BRN20

operative / task chairs

TIM

ufficio / office

attesa e collettività

waiting and community chairs



BOX	69
JOLLY	73
POP	75
FREE	79
KUBIKA	81
ISLA	85
EASY	89
ALEXIA	93



attesa e collettività / waiting and community chairs

BOX

sala attesa / waiting room
 lounge / lounge
 ufficio / office
 casa / home
 caffetteria / cafeteria



C613V



C613V

C612V

C611V



C611V



C612V

JOLLY



C6104V

sala attesa / waiting room
 ufficio / office
 sala riunioni / boardroom
 biblioteca / library



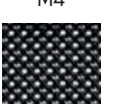
M2



M3



M4



M10



C6103V

attesa e collettività / waiting and community chairs

POP

-
- sala conferenza / conference room
 - sala riunioni / boardroom
 - ufficio / office
 - biblioteca / library



N162VBN BR160

C162VNR BR160



B162VNR BR160

B162VBN



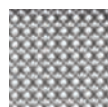
C161VBN BR163DX BR166TASX



N161VNR



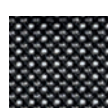
M2



M3



M4



M10





G990V BR990

attesa e collettività / waiting and community chairs

FREE

- sala attesa / waiting room
- sala riunioni / boardroom
- ufficio / office
- biblioteca / library



N992T3



N990V



attesa e collettività / waiting and community chairs

KUBIKA

- sala attesa / waiting room
- sala conferenza / conference room
- caffetteria / cafeteria
- sala riunioni / boardroom
- biblioteca / library



NERO
black



BIANCO
white



VERDE
green



TORTORA
taupe



C1512V



C1510V



C1514V



C1511V

C1513V





attesa e collettività / waiting and community chairs


ISLA

esterno / outdoor
 casa / home
 caffetteria / cafeteria
 sala attesa / waiting room

 ANTRACITE
charcoal

 BIANCO
white

 VERDE SALVIA
sage green

 CIPRIA
powder

 VERDE MUSCHIO
moss green



ISLA



ISLA



ISLA



ISLA BR



ISLA BR



RE-ISLA



BLU
blue



GRIGIO
grey

RE-ISLA BR



RE-ISLA



B112



P112 BR05T BR05



P112 NET



B112 NET

attesa e collettività / waiting and community chairs

EASY

- sala conferenza / conference room
- ufficio / office
- sala attesa / waiting room
- biblioteca / library
- sala riunioni / boardroom



N22+TNET



B112PVC



P112PVC



C112PVC



WN22B



W112N



NERO
black



GRIGIO
grey



ROSSO
red



BLU
blue



BR05



BR05T



N23PVC



W112B



W112C



N7062T3



ALEXIA

attesa e collettività / waiting and community chairs

ALEXIA

- sala attesa / waiting room
- sala conferenza / conference room
- biblioteca / library
- caffetteria / cafeteria



BIANCO PERLA
off white



GRIGIO MUSCHIO
grigio



GIALLO
yellow

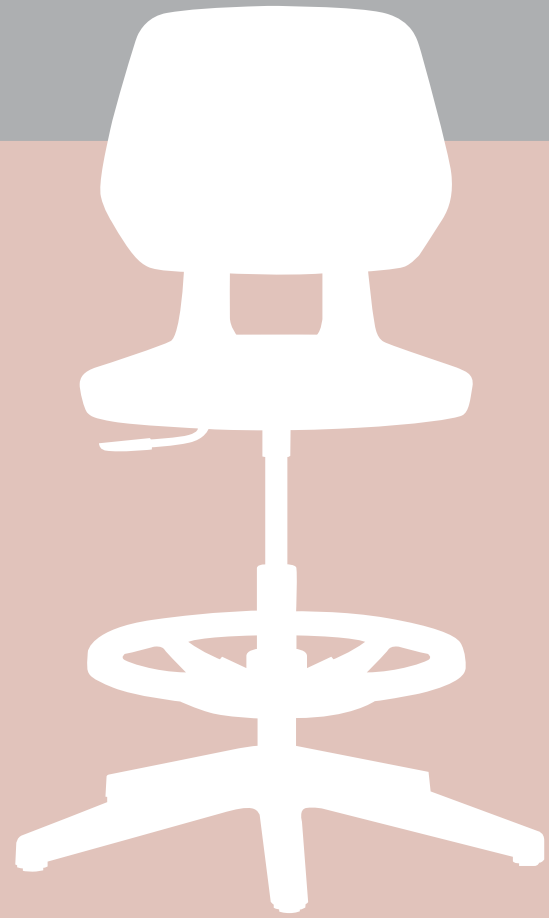


BLU
blue



C7060V

ALEXIA



sgabelli e tavoli

stools and tables

PRACTICA	97
BREAK	101
FLIP	103

sgabelli e tavoli / stools and tables

PRACTICA

ufficio / office



R070G



B070G



N070G



BREAK

caffetteria / cafeteria
casa / home



AV075B

AV076 QD70

AV077 TD70

N075B



N076 TD60

N077 TD70

N077 QD70

N076 QD60

FLIP

ufficio / office
 biblioteca / library
 sala riunioni / boardroom



B15R B16



N15R B16

appendiabiti / coat stand

TREE

sala attesa / waiting room
ufficio / office
biblioteca / library



AN-TREE



AG-TREE



AC-TREE

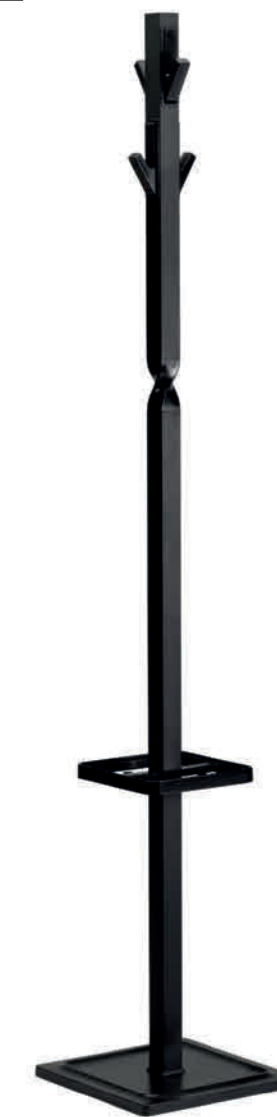
appendiabiti / coat stand

KLIP

sala attesa / waiting room
ufficio / office
biblioteca / library



AB-KLIP



AN-KLIP

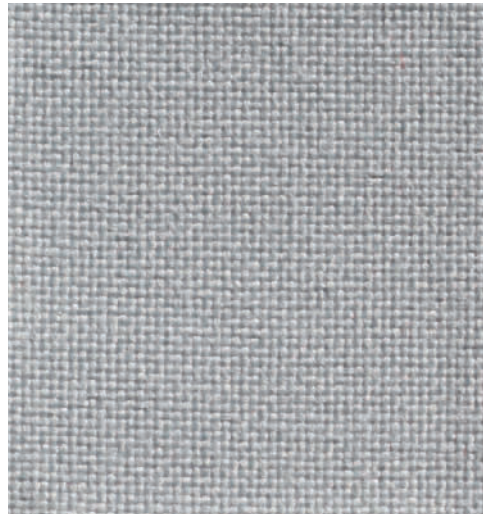


Rivestimenti Coverings

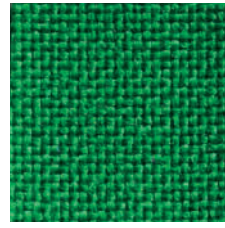
CATEGORIA 1 MADRID



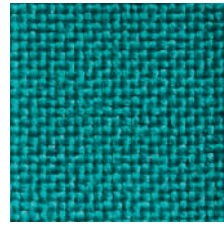
108



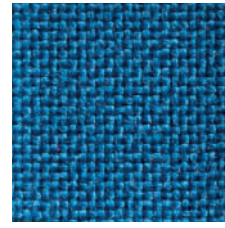
MD515



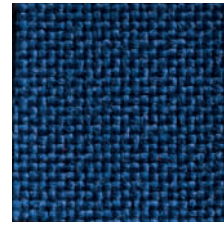
MD506



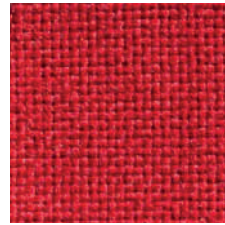
MD509



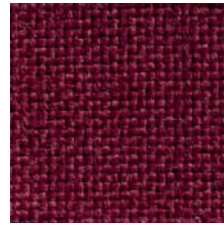
MD529



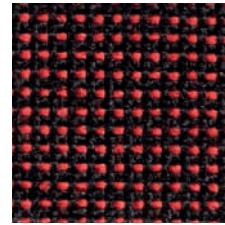
MD510



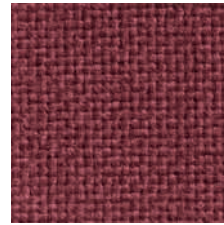
MD502



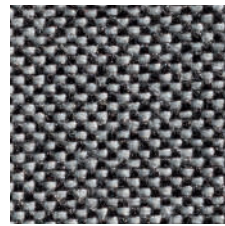
MD530



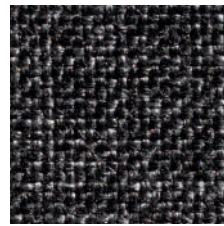
MD520



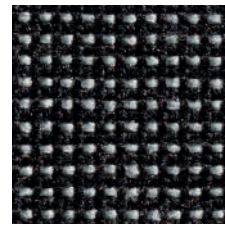
MD505



MD519



MD514

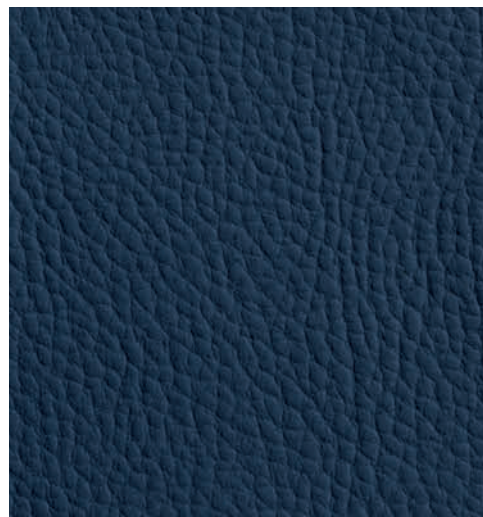


MD518

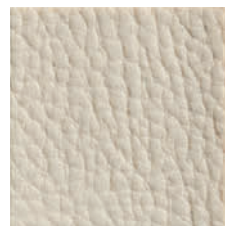


MD511

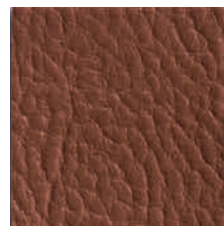
CATEGORIA 1 COVE



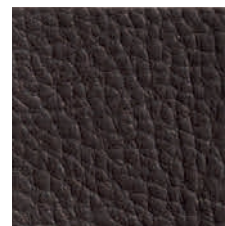
C539



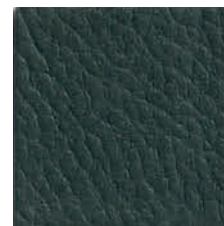
C21



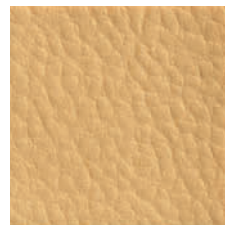
C301



C336



C196



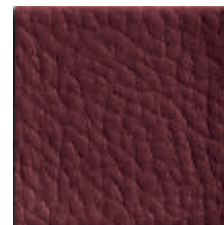
C238



C371



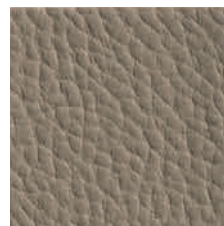
C441



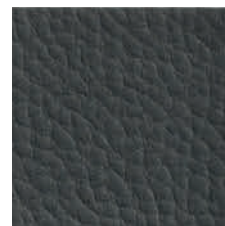
C413



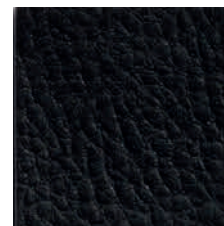
C1



C84

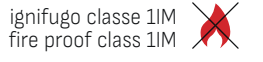


C98

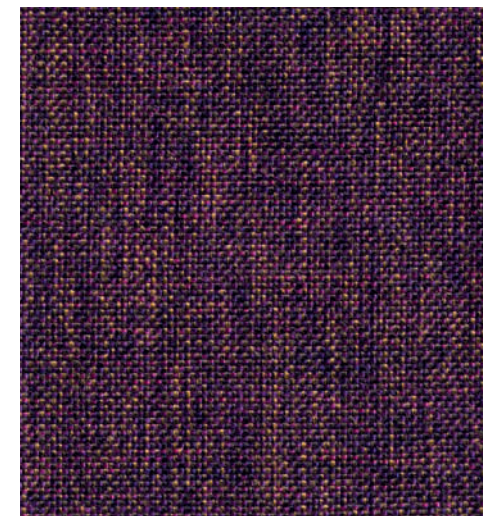


C560

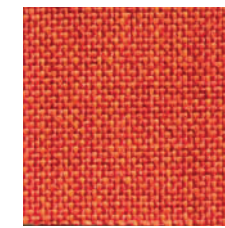
CATEGORIA 2 ANGEL



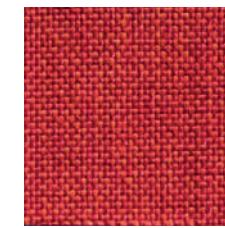
109



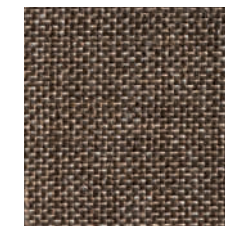
AN38



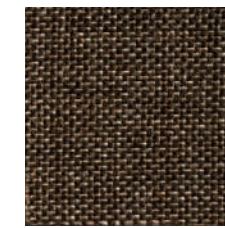
AN30



AN35



AN45



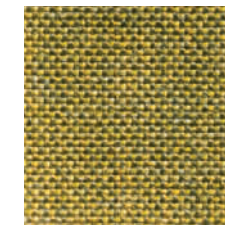
AN20



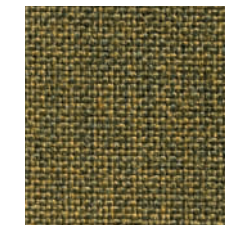
AN53



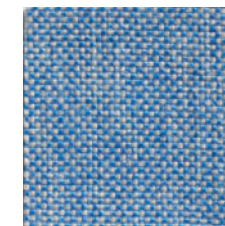
AN50



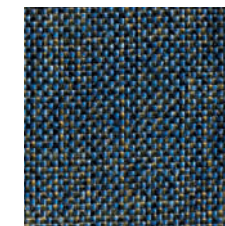
AN41



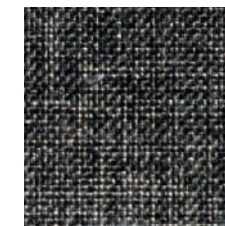
AN09



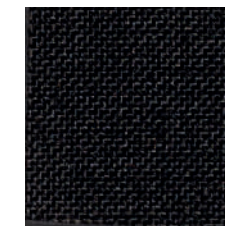
AN55



AN39

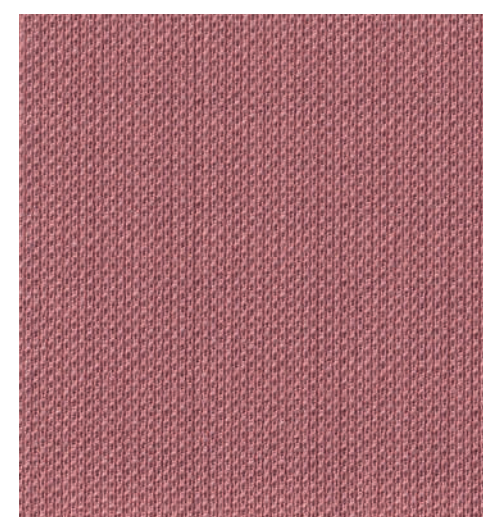


AN56

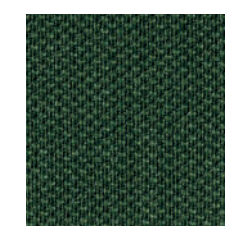


AN57

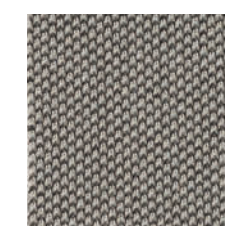
CATEGORIA 2 ONE



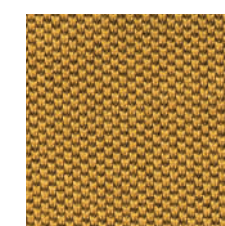
ON4067



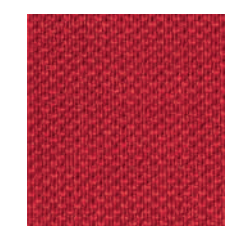
ON7029



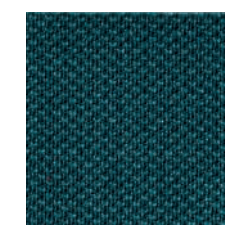
ON1506



ON3530



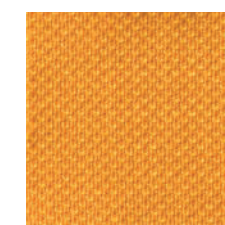
ON4028



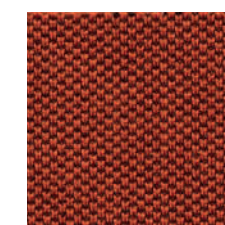
ON7033



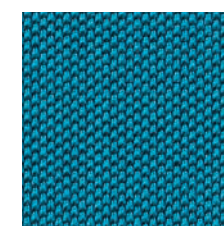
ON2519



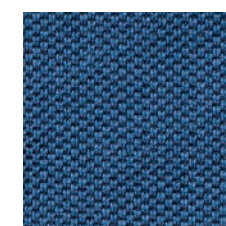
ON3008



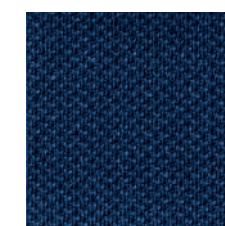
ON4566



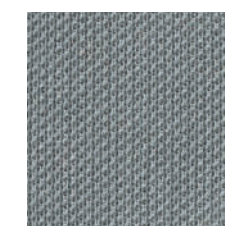
ON6591



ON6512



ON6017



ON8032



ON8017



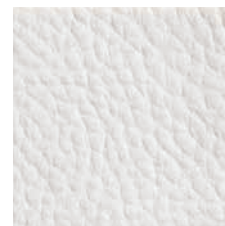
ON8033

CATEGORIA 2 GAZEBO

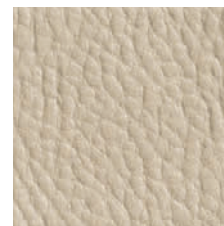
ignifugo classe 1IM
fire proof class 1IM



S4979



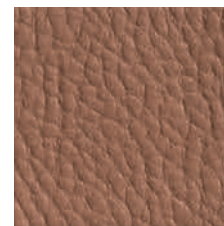
S6



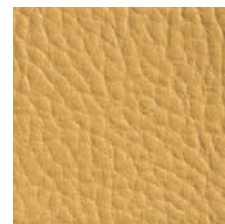
S151



S1194



S1307



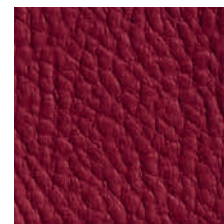
S71



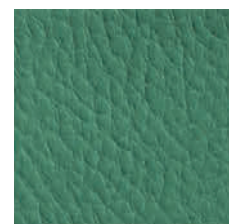
S792



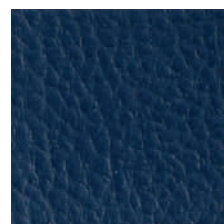
S680



S726



S1809



S4947



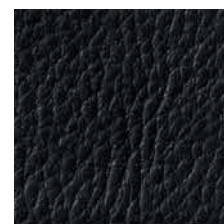
S6985



S4009



S1955



S991

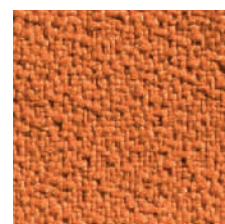
CATEGORIA 2 KING-FLEX



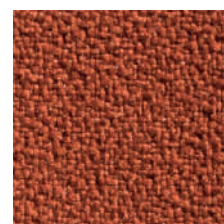
ignifugo classe 1IM
fire proof class 1IM



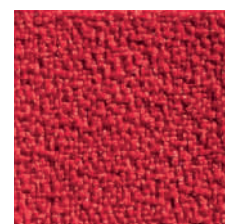
KF1006



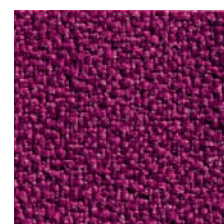
KF4030



KF4066



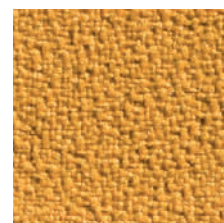
KF4008



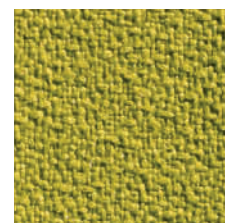
KF4020



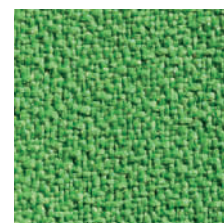
KF8027



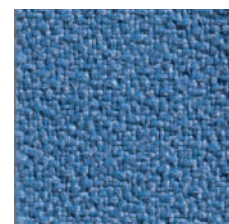
KF3083



KF3030



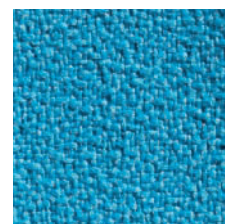
KF7013



KF6026



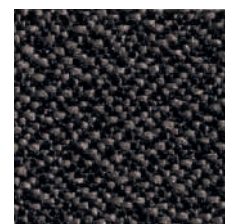
KF7023



KF6007



KF8009



KF9228



KF8033

SCHEDA TECNICA Technical sheet

CATEGORIA 1

MADRID

± 230 g/mq

100% PP polipropilene F.R. / 100% PP Polypropylene F.R.

80.000 cicli martindale / 80.000 martindale cycles

Resistenza al fuoco/ Flammability

CLASSE 1 IM - UNI 9175

EN 1021 - 1/2

BS 5852 /2 - CRIB 5

California TB 117

COVE

± 565 g/mq

82% PVC - 7% Cotone - 11% Poliestere

82% PVC - 7% Cotton - 11% Polyester

50.000 cicli martindale / 50.000 martindale cycles

CATEGORIA 2

ANGEL

± 228 g/mq

100% polipropilene F.R. / 100% polypropylene F.R.

100.000 cicli martindale / 100.000 martindale cycles

Resistenza al fuoco/ Flammability

CLASSE 1 IM - UNI 9175

EN 1021 - 1/2

BS 5852 /2 - CRIB 5

California TB 117

ONE

± 350 g/mq

100% Poliestere riciclato / 100% Recycled polyester

100.000 cicli martindale / 100.000 martindale cycles

Resistenza al fuoco/ Flammability

CLASSE 1 IM - UNI 9175

EN 1021 - 1/2

BS 5852 /2 - CRIB 5

California TB 117

GAZEBO

± 640 g/mq

87,5% Polivinilcloruro plastificato - 12,5% Cotone

87,5% Plasticized polyvinylchloride - 12,5% Cotton

50.000 cicli martindale / 50.000 martindale cycles

Resistenza al fuoco/ Flammability

CLASSE 1 IM - UNI 9175

EN 1021 - 1/2

BS 5852 /2 - CRIB 5

California TB 117

KING-FLEX

± 300 g/mq

100% poliestere Trevira CS / 100% Polyester Trevira CS

100.000 cicli martindale / 100.000 martindale cycles

Resistenza al fuoco/ Flammability

CLASSE 1 IM - UNI 9175

EN 1021 - 1/2

BS 5852 /2 - CRIB 5

California TB 117

CREDITS

art direction

Stefano Adriani

graphic design

Laura Berdusco

images

Stefano Adriani

colour separation

Creative Studio s.r.l.

print

Grafiche Italprint s.r.l.

Stampato su carta certificata FSC utilizzando inchiostri di origine vegetale
Printed on FSC certified paper using sustainably sourced inks



